


Mobilité Verte (MoVe) Yaoundé

Rigobert Kilu, Viviane Weinmann, and Ariadne Baskin

TCCW Berlin | 14/09/2023 | presented by Mathias Merforth





Analysis by SUMP

“Yaoundé's transport system ‘is accident-prone, uncomfortable, polluting and expensive for the population, yet relatively fluid.’”

MoVe Yaoundé Project Overview

Objective:

Promoting active mobility & professionalisation of popular transport services

to avoid increasing motorisation rates of private cars, GHG emissions and air pollution as well as improve mobility offers for ALL.

Core Activities:

- 1. Action Field 1: Green Corridors & Reshaping Downtown Yaoundé**
to demonstrate the transformation of the urban fabric
- 2. Action Field 2: High-quality Popular Transport & Flexible Mobility Systems**
to improve quality and safety, especially for the most vulnerable users while modernising the taxi fleet

Project set-up:

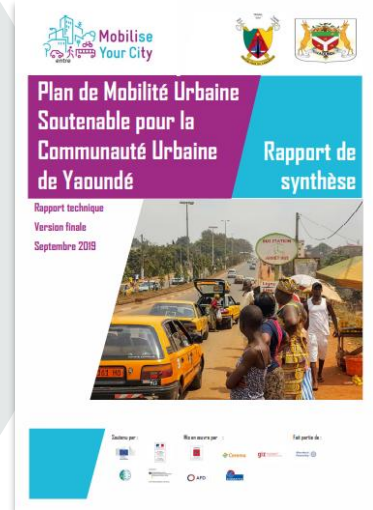
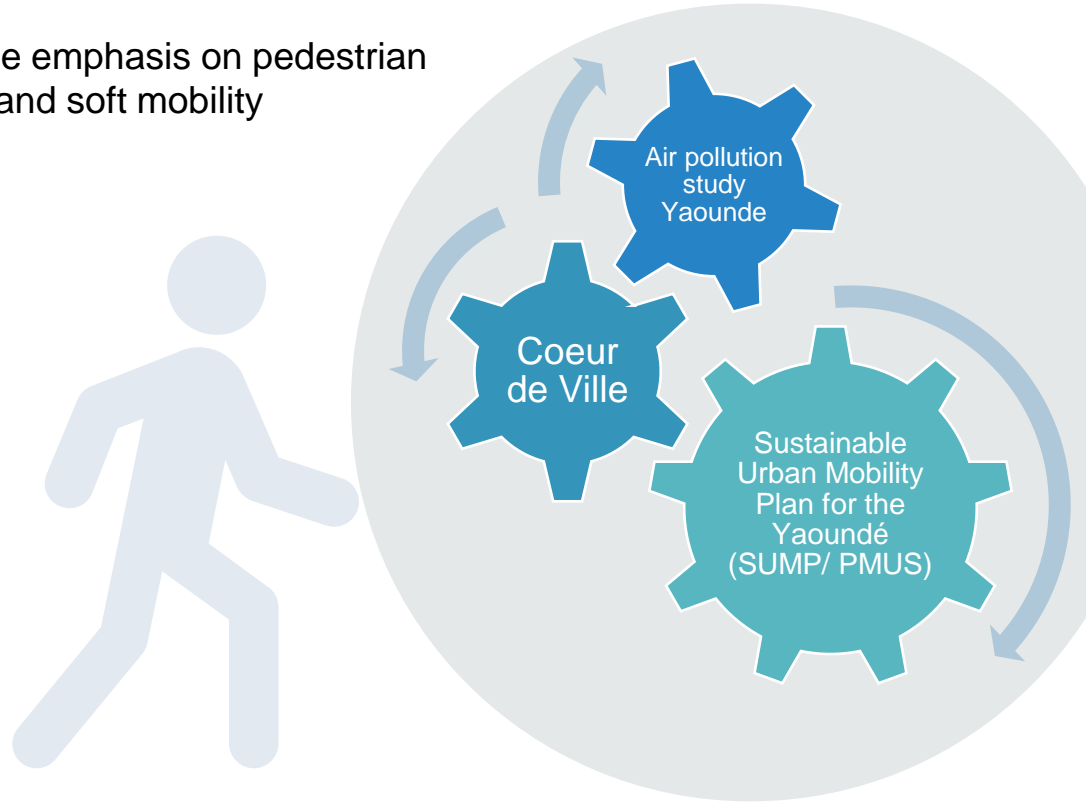
Duration: 2023 – 2027 (4 years)

Donor: European Union

Local partner: Communauté urbaine de Yaoundé (CUY)

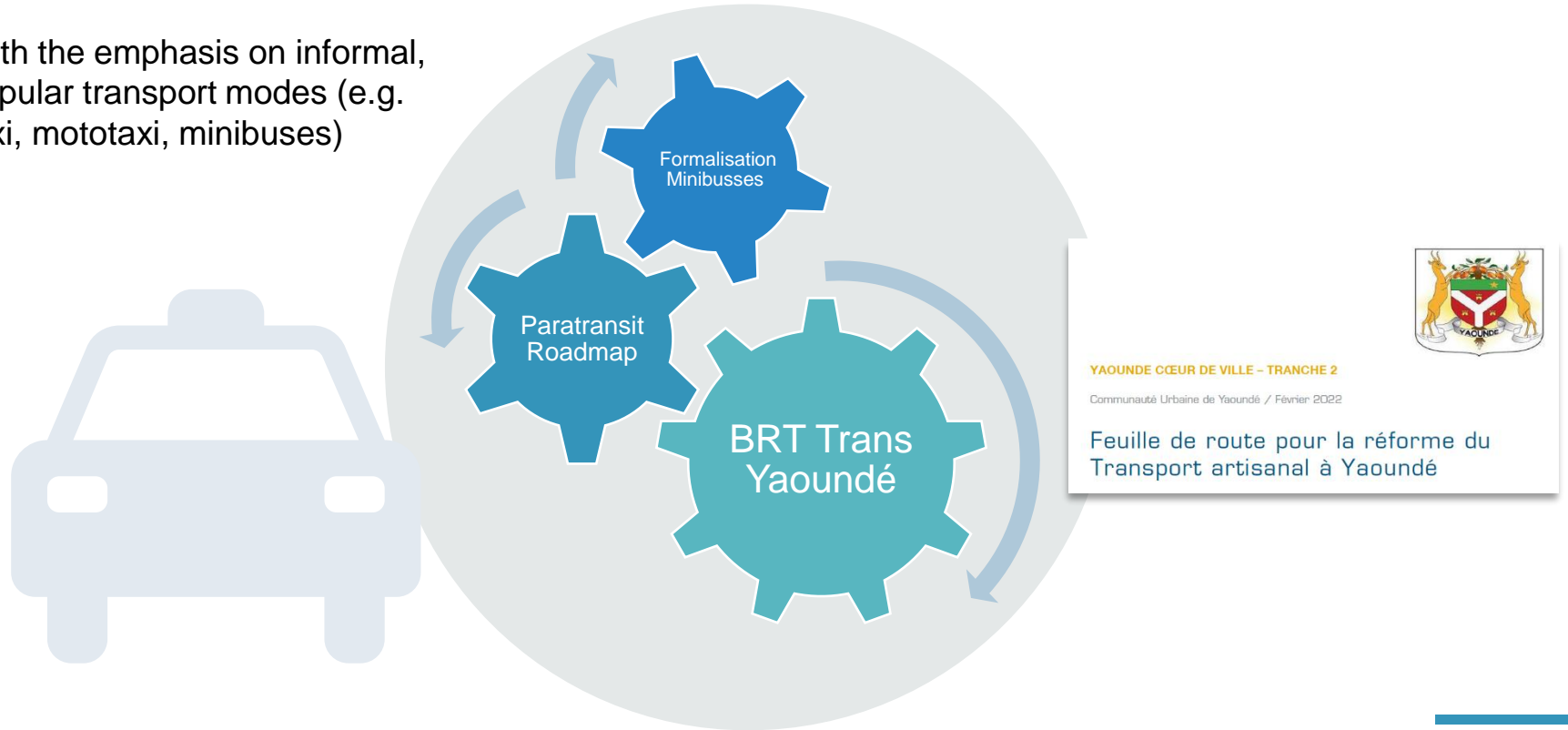
Yaoundé city centre becomes clean, green and inclusive

With the emphasis on pedestrian zones and soft mobility



The ambitious transformation of mobility in Yaoundé has already begun

With the emphasis on informal, popular transport modes (e.g. taxi, mototaxi, minibuses)





Street life in
downtown
Yaoundé

(Feb. 2023)

Action Field 1: Transform Yaoundé's core to be safer, cleaner & more comfortable for pedestrians and public transit passengers

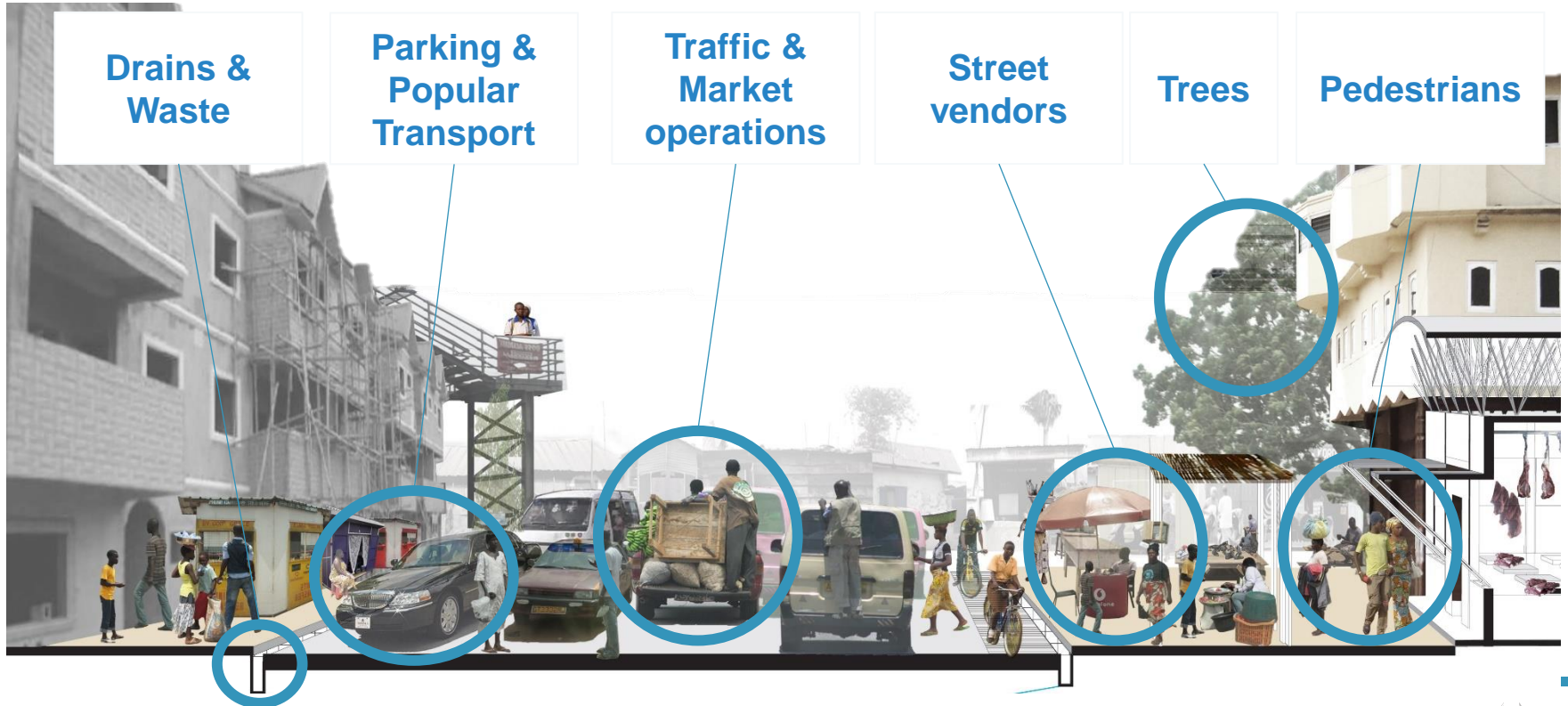


Map legend:

- █ Main traffic arteries
- █ Traffic-calmed
- █ Green corridors

City centre Zone 30
(Option 3)
Extending the new
urban fabric

Action Field 1: Reimagining by considering all users



Example by Millennium Cities Initiative - Strategic analysis and Toolkit for the Ga Mashie and Nima neighborhoods in Accra, Ghana
Note: This is not a final technical design, but merely serves to illustrate possible approaches.



**“Collective”
taxis in
downtown
Yaoundé**

(Feb. 2023)

Action Field 1: Green corridors – Managing traffic flows effectively

to improve motorised traffic flows and access to the city center and support the CUY in upgrading the city center's civil infrastructure (e.g. sidewalks, drains)



NB: Non contractual visual, made for illustration purposes only.

Note: These concepts are based on international best practices in soft mobility. Its applicability to the Yaoundé cycling infrastructure remains to be discussed.

Action Field 2: High Quality Popular Transport and Flexible Mobility Systems

to improve quality and safety, especially for the most vulnerable users, while professionalising the taxi sector

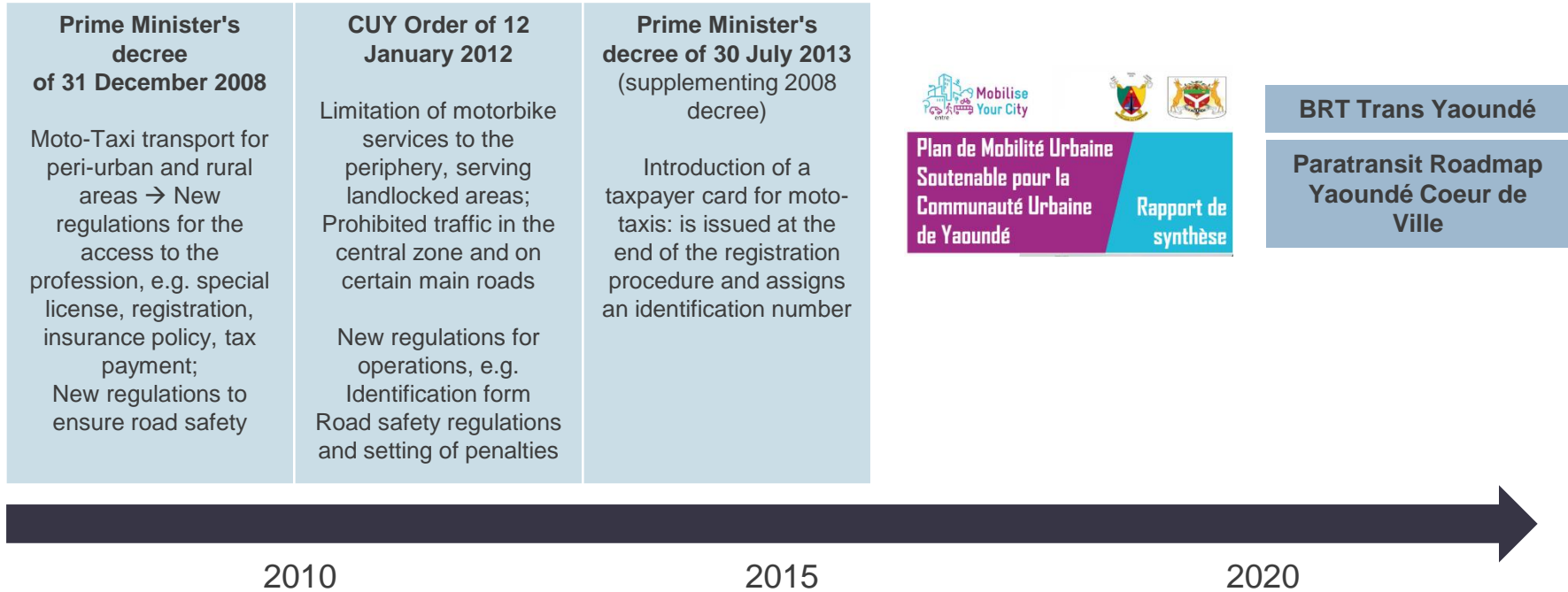


YAOUNDE OEUR DE VILLE – TRANCHE 2

Communauté Urbaine de Yaoundé / Février 2022

Feuille de route pour la réforme du
Transport artisanal à Yaoundé

Action Field 2: Previous activities in reforming the popular transport sector



Action Field 2: High Quality Popular Transport and Flexible Mobility Systems

Support Yaoundé to modernise their popular transport services to improve safety, reliability, comfort and environmental performance as well as protect their workers to ensure equitable mobility for all.

Regulation & Licensing

- Enumerate fleet
- Registration mechanism (licence management, ensure technical inspections)
- Design popular transport dashboard
- Conceptualise the future use of the dashboard (e.g. regulation)

Pick-Up & Drop-Off Zones

- Strategically located pick-up & drop-off zones along the periphery of the city centre

Service Quality

- Sexual harassment mechanism
- Driver trainings



Stakeholder Dialogues

- Relationship mapping
- Stakeholder communication channels
- Taxi cooperatives & incentives

Action Field 2: High Quality Popular Transport and Flexible Mobility Systems

to improve quality and safety, especially for the most vulnerable users, while professionalising the taxi sector (following the recommendations of the “Paratransit Roadmap”)



NB: Non contractual visual, made for illustration purposes only.

MoVe Yaoundé – Our Approach

The joint vision with our partners is of utmost importance in project planning and implementation. Our holistic approach in Yaoundé consists of four levels of intervention:

Demonstrating Change

We demonstrate the improvement of the urban fabric through pilot projects and permanent sustainable infrastructure interventions.

Regulatory Frameworks and Reforms

We work with the CUY and national government to ensure technical capacity and appropriate governance channels are established.

Bottom-up stakeholder engagement

We support stakeholder engagement of political actors on national and local levels, as well as the integration of the private sector, civil society and academia in change management processes.

Capacity Development

We train and support our partners and relevant stakeholders for sustainable long-term change.

Thank you!

Mathias Merforth

Transport Economist

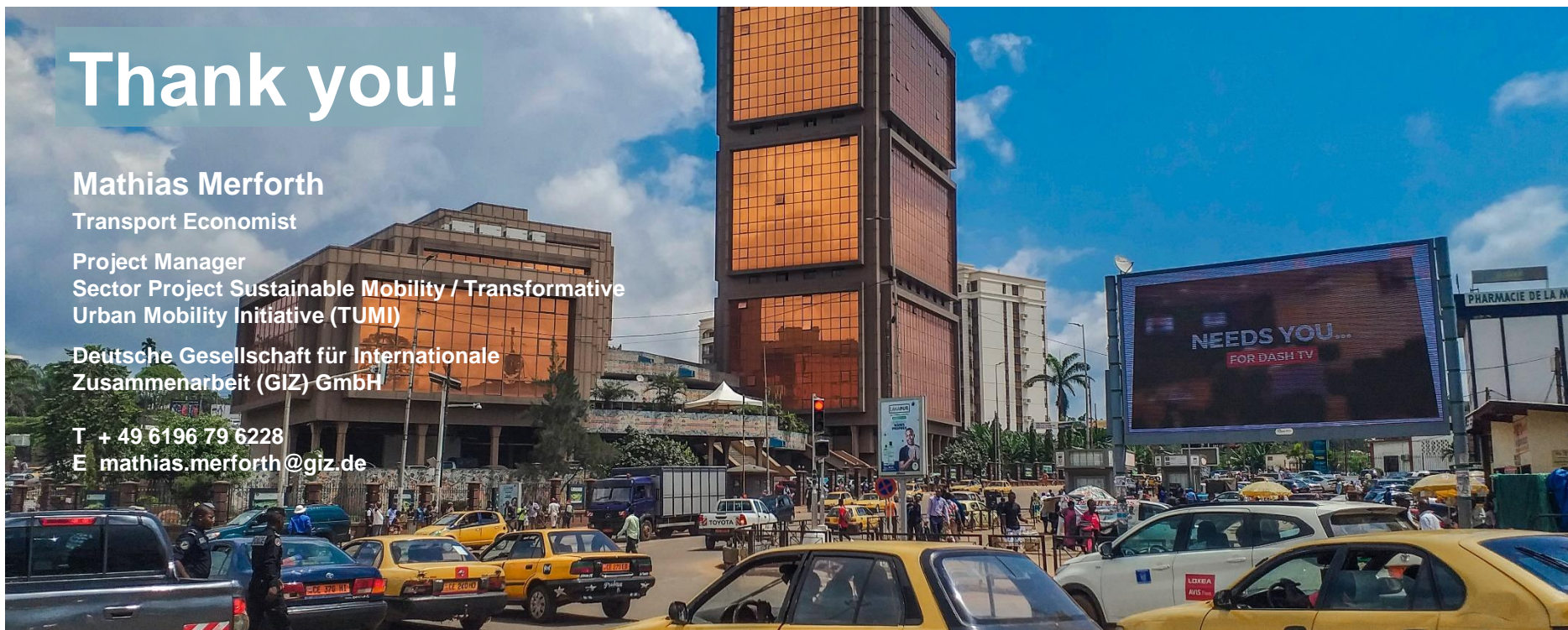
Project Manager

Sector Project Sustainable Mobility / Transformative
Urban Mobility Initiative (TUMI)

Deutsche Gesellschaft für Internationale
Zusammenarbeit (GIZ) GmbH

T + 49 6196 79 6228

E mathias.merforth@giz.de



giz Deutsche Gesellschaft
für Internationale
Zusammenarbeit (GIZ) GmbH

